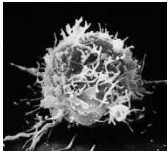


Stress and Immune Functioning (Kiecolt-Glaser et al, 1984)



This activity will help you to:

- Describe APFCC for Kiecolt-Glaser et al (1984)
- Distinguish between essential detail and elaboration

Using your text or other sources, summarise the study. Distinguish between essential details and elaboration in your description.

Kiecolt-Glaser et al's (1984) study of stress and immune functioning in students

	Essential Information	Additional Detail
Aims		
Procedures		
Findings		
Conclusions		
Criticisms		