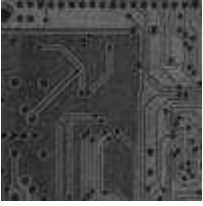


The Multistore Model

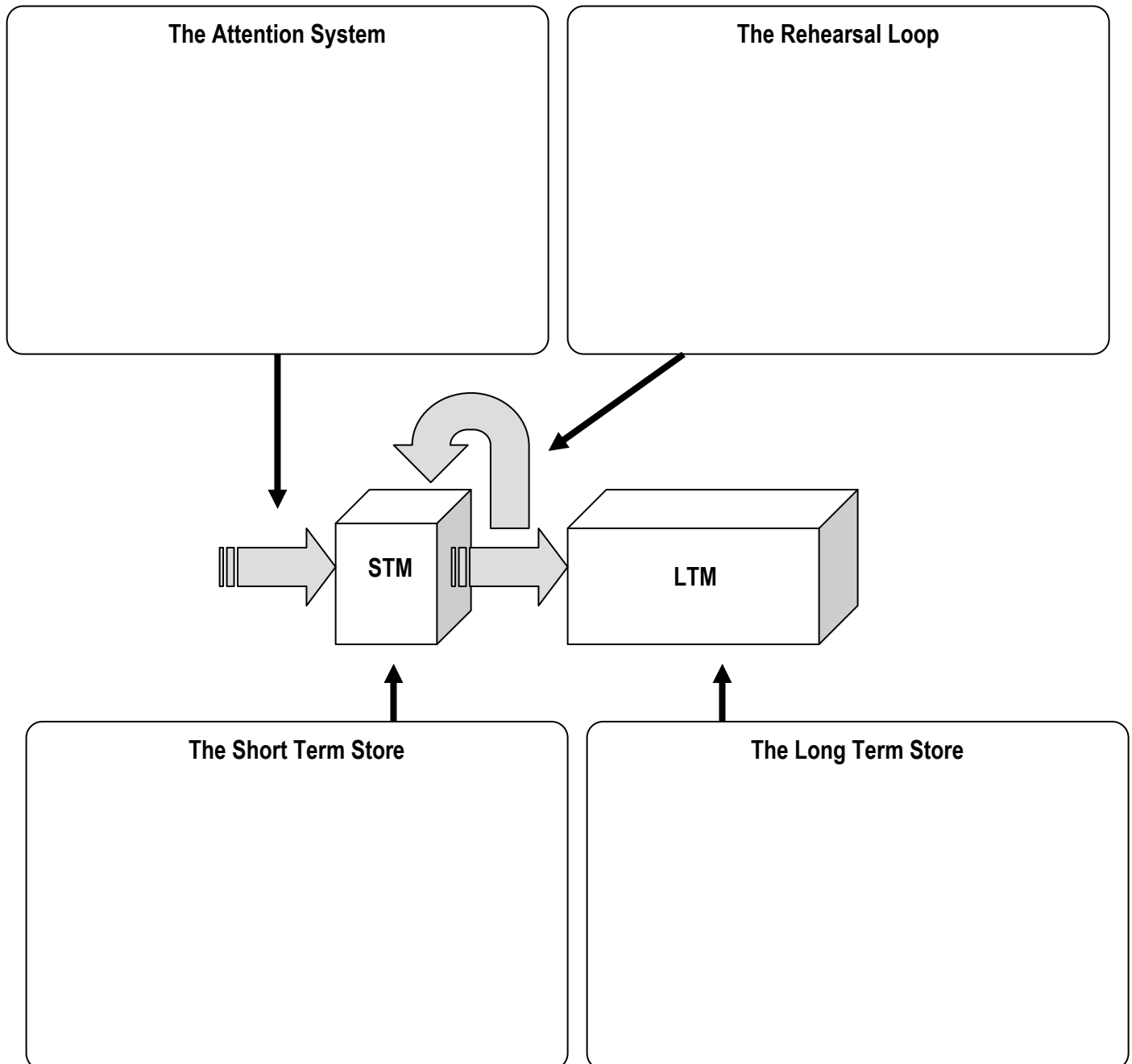


This activity will help you to:

- Describe the multistore model of memory
- Identify the hypotheses of the multistore model
- Use evidence to assess the multistore model
- Evaluate the multistore model

The Multistore Model

Using the sources of information available to you, briefly describe the different components of the multistore model.



When we evaluate a psychological theory, we must take each of the claims it makes in turn, and establish whether they are supported by the evidence we have from studies. Here are some of the claims made by the multistore model. For each claim, explain whether the evidence supports or challenges it.

Claim	Evidence	Supported?
Memory consists of two separate storage areas	Glanzer & Cunitz (1966); Milner (1966)	
Information is moved from STM to LTM by rehearsal	Hyde & Jenkins (1973)	
STM and LTM are unitary stores that cannot be subdivided	Baddeley et al (1973); Tulving (1972)	